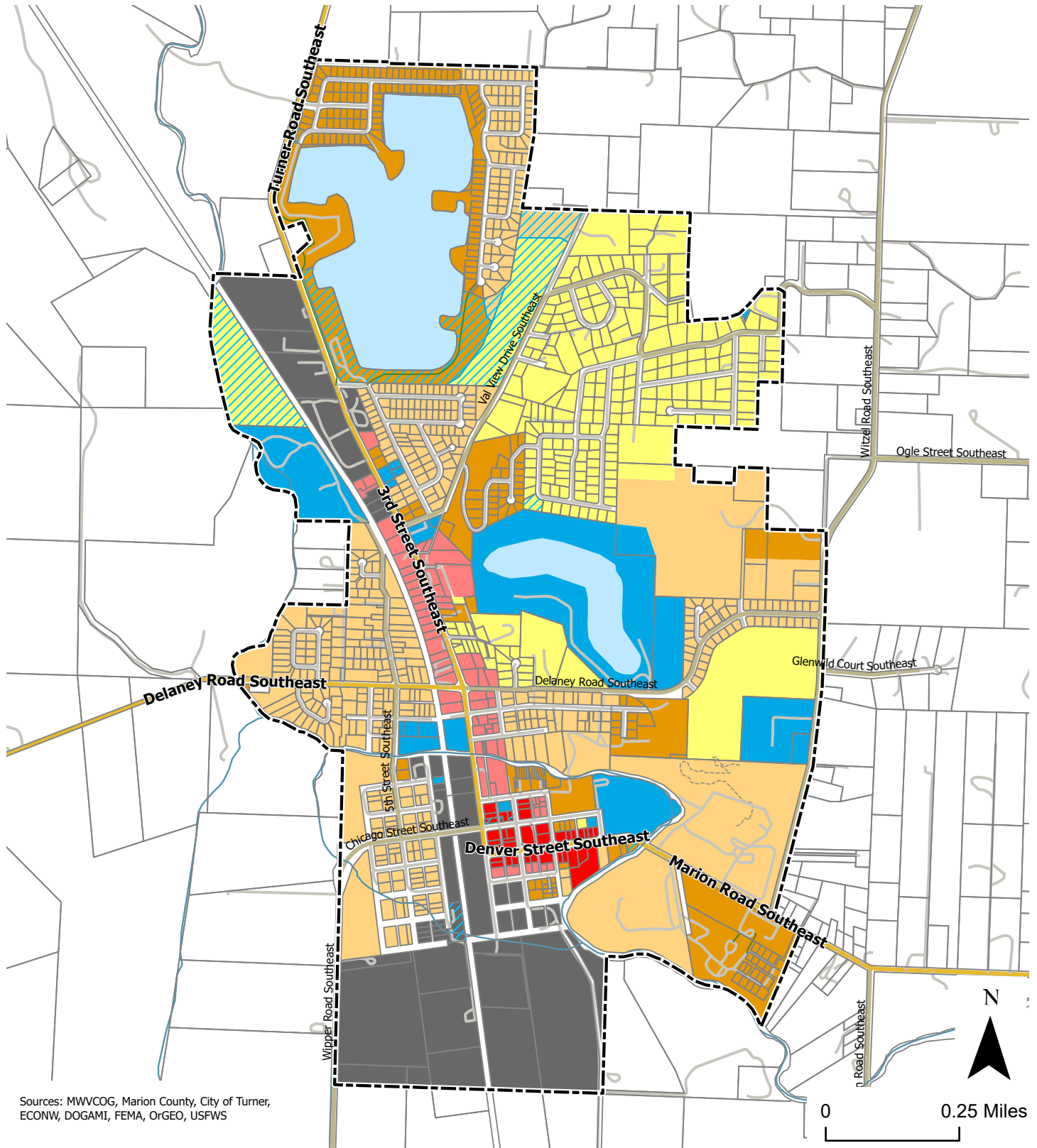


Zoning and Comprehensive Plan Designations



Sources: MWVCOG, Marion County, City of Turner, ECONW, DOGAMI, FEMA, OrGEO, USFWS

- | | | | |
|------------------------|--|--------------------------------|--------------------------|
| UGB | Comp Plan/Zoning
R-1: Single-Family Residential | R-11: Multi-Family Residential | C-2: Downtown Commercial |
| Taxlot | R-2: Single-Family Residential | C-1: General Commercial | M-1: General Industrial |
| Conditional Public Use | | | P: Public |