

**TMDL ANNUAL REPORT FOR REPORTING PERIOD  
JULY 2018 THROUGH JUNE 2019**

**CITY OF TURNER**  
[www.cityofturner.org](http://www.cityofturner.org)

**Prepared by:**  
**CITY ADMINISTRATOR DAVID SAWYER**

503-743-2155(p)

503-743-4010(f)

[manager@cityofturner.org](mailto:manager@cityofturner.org)

---

**Background**

The Oregon Department of Environmental Quality (DEQ) has set Total Maximum Daily Loads (TMDLs) for water bodies located within the Willamette Basin. The TMDL was approved by the Environmental Protection Agency (EPA) and issued as an Order by DEQ in September of 2006. TMDLs, limit the total amount of specific pollutants that may be discharged into a given waterbody. As per the Willamette Basin TMDL, the City must develop a non-point source (NPS) TMDL implementation plan to address the waterbodies and parameters outlined in Table 1 below.

**Table 1: Basins and Parameters**

<b>Basin Name</b>	<b>Sub-basin</b>	<b>Water bodies within the City of Turner</b>	<b>Parameters</b>
Willamette	Middle Willamette	Perrin Lateral Mill Creek By-Pass Canal	Bacteria Temperature Mercury

**Overview of Reporting Period**

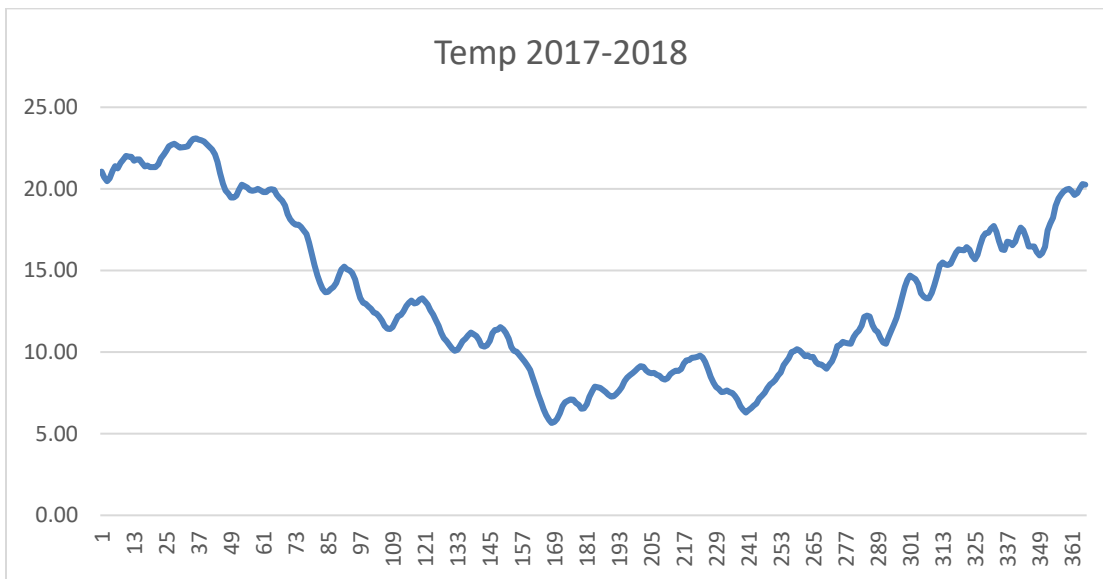
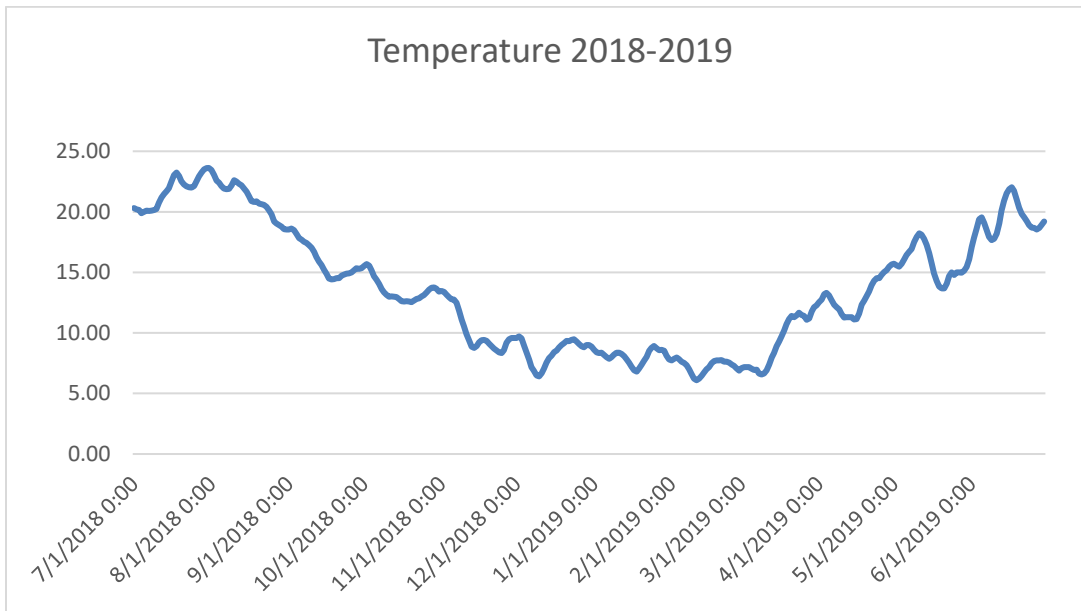
The major part of the water quality effort that Turner is required to administer is the MS4 permit. The TMDL supplements this with additional specific measures that focus on Temperature.

A general lack of resources available still requires the City to prioritize its efforts.

**Permit Activity Narrative: Temperature BMP Measures**

Potential temperature related impacts come from changes in the water flow or the shade canopy to the creek. Over the permit cycle, there has only been one active development site along the regulated tributaries in Turner. In addition, the annual kayak of the creek looking for flood risk concerns did not reveal any unreported or illegal activity. The riparian corridor thus remains of high quality and stable.

We have included the temperature log data over the reporting cycle from the stream gage located at the center of town.



Doing in total average for each of these fiscal years, we find that the average daily temperature in Mill Creek during the 2017-2018 reporting cycle was 13.53°. For the 2018-2019 reporting cycle the average temperature was 13.68. This represents an increase 1.1% from last year and 2.7% over 2 years. The day by day temperatures can be provided to DEQ upon request if.

We continue to work with the Jane Goodall Environmental Middle School in Salem to help develop and manage the 15 acres of new park land we have that borders the creek. Part of that relationship provides teacher training to the staff at Turner Elementary school which then supports their work in educating children about the stream and streambank. In addition, a new trail was built providing controlled viewing access to the creek.

Regarding development, there were no development projects that happened within the riparian area during the project cycle. Purchase of city land was completed adding another parcel to what we as an organization own along the creek. This will be the site of new public works facility. There will be no intrusion from the facility into the riparian zone.

There was one violation in the spring of 2019. In order to pursue water rights for the irrigation of their conference center lands, Oregon Christian convention had cut a 20 foot wide corridor through the riparian zone down to the creek to install a pump. The violation was communicated to staff, and the area was immediately straw mulched to protect against erosion control. The city continues to work with the staff to ensure that replanting happens this fall.

Overall, a kayak based evaluation shows that streamside tree cover remains highly stable. No large trees or bank structures have been damaged over the reporting period.

---

David Sawyer, City Administrator

---

Date